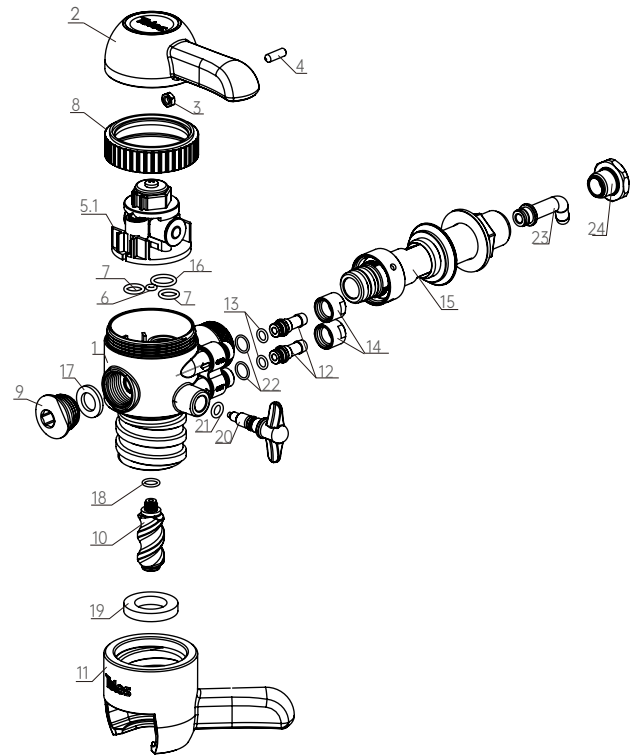


BEER TAP FILLING TAP



1017008



SPECIFICATIONS

Part No.	Finish	Body Material	Shank	Bottleneck Diameter	N.W/Unit (kg)	Unit Dimension	G.W/Unit (kg)	Pcs/Ctn	Box Dimension	G.W/Box (kg)
1017008	Black	ABS	G5/8	3-3.3cm	0.62	16.5cm Lx11cm W x12cm H	0.79	20	46cm Lx41cm W x34cm H	15.80

REPLACEMENT PARTS

Number	Name of Parts	Material	Quantity	Number	Name of Parts	Material	Quantity
1	Body	ABS+57-3	1	13	O ring	EPDM	2
2	Handle	PC+ABS	1	14	Coupling Nut	57-3	2
3	Nut	SS	1	15	Shank	Assembly	1
4	Screw	SS	1	16	O ring	EPDM	1
5	Valve Core	Assembly	1	17	Gasket	Silicone	1
6	O ring	EPDM	1	18	O ring	EPDM (Hardness70)	2
7	O ring	EPDM	2	19	Gasket	Silicone	1
8	Nut	ABS	1	20	Pin	Assembly	1
9	Plug	ABS	1	21	O ring	EPDM	1
10	Core	PC+ABS	1	22	O ring	EPDM	2
11	Bottle Connector	ABS	1	23	Elbows	PP	1
12	Connector	May-57	2	24	Nut	ABS	1